

Special worktable for clamping tasks - Size SL

Special working bench with a Ø28mm hole grid enabling the usage of various Ø28 tools for clamping of parts for treatment, preadjust steel constructions before welding and may fix small machining devices or tools to the plate as well as preset clamping fixtures.

Examples of use:

- Metal works** - 3D-Welding table for clamping single pieces to welding constructions
- Wood works** – Clamping of wood constructions for gluing
- Machine building** –Table for treatment of single machine parts with clamping functions
- Toolshop or repair** – Securing of toolparts before treatment or transportation within shop
- Gen. Industrie** - Carrier for all kind of small fixtures or multi purpose working bench in maintenance

Tabletop dimensions	1950mm x 950mm
Height of table	800mm
Diameter of holes at tabletop	Ø 28mm
Hole grid	100mm x 100mm
Material of tabletop	See table below
Table plate height	16mm dual
Max. load	2000 kg
Net weight	290 kg

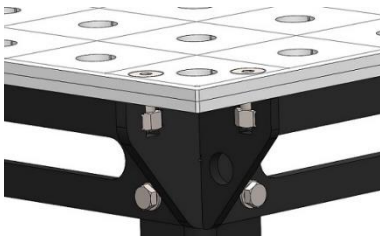


Image: SST 80/16 SL

Tabletop

Description

Tabletop built as a dual plate system with upper plate, lower plate and support construction of 2 beams lengthwise and 3 cross beams achieving flatness acc. workstandard WN5110000 in dependence upon DIN ISO 2768-2. The dual plate design enables the use of different surface materials which can be chosen in accordance with the working task (see table materials). In standard top plate is made from material S355 (lower plate standard S235). The surface is carrying a Ø28mm hole grid 100x100mm which allows the usage of various clamping tools (available clamping tools can be selected in our website www.tempupotec.de). At the top plate surface also a line grid is engraved in order to assist visual orientation. Due to the use of two 8mm plates in dual design the optimal thickness of the top plate is 16mm.



Material of top plate of tabletop	Opt. material description	Tensile strenght MPa	Hardness HV / (HBa)	Type decription	Type no.
Regular steel ST52	S355, 1.0976	Rm 430-550	ca. 175 (128-163)	SST 80/16 SL	100345
Higher strenght steel ST70	S700, 1.8974	Rm 780-950	ca. 265 (220-280)	SST 80/16 SL ST70	100346
Stainless steel	304, 1.4301, Niro	Rm 500-700	ca. 205 (150-200)	SST 80/16 SL VA	100347
Other materials for special requirements	For example: Aluminium, electrical insulating materials for electrical installations				

Table base

Description



Robust steel table base with 4 table-legs made from 8mm steel. Each table-leg is equipped with a levelling feet providing the opportunity to adjust floor deviations of up to 50mm at place of use. Cross beams are mounted at the lower third of the table-legs to achive optimal stiffness of the table system. The cross beams are designed also to carry a storage bottom as well as other storage facilities on request. The table legs covering a square of (1240x740)mm providing an optimal foot space for the operator at the working place. All parts of the table base are longlife coated in black RAL9005 (Powder or KTL). All table base also are available as single units for many other customer purposes.