

Height adjustable special worktable for clamping tasks - Size S

Height adjustable special working bench with a Ø28mm hole grid enabling the usage of various Ø28 tools for clamping of parts for treatment, preadjust steel constructions before welding and may fix small machining devices or tools to the plate as well as preset clamping fixtures. The version as a height adjustable table is equipped with a manual hydraulic system to adjust ergonomical height or if temporarily use at other machines or systems is required, especially if this unit is used to feed heavy items or plates into machines or onto other work stations. The bottom rails are carrying some transportation bars which allow to move the table easily within the work environment or to other work places.

Examples of use:

Metal works – Height adjustable 3D-Welding table for clamping single pieces to welding constructions

Wood works – Height adjustable table for Clamping of wood constructions for gluing

Machine building –Table for treatment of single machine parts with clamping functions with flexible height

Toolshop or repair – Securing of toolparts before treatment or transportation within shop and adaptable height depending of tools position

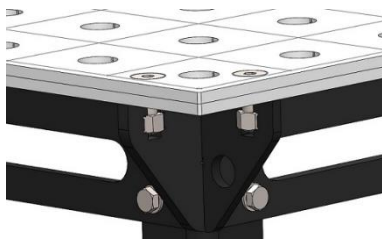
Gen. Industrie - Ergonomic and movable carrier for all kind of small fixtures or height adjustable multi purpose working bench in maintenance and repair shops



Image: SST 65-105/16 S

| | |
|-------------------------------|-----------------|
| Tabletop dimensions | 1400mm x 900mm |
| Height of table | 650mm - 1050mm |
| Diameter of holes at tabletop | Ø 28mm |
| Hole grid | 100mm x 100mm |
| Material of tabletop | See table below |
| Table plate height | 16mm dual |
| Max. load | 2000 kg |
| Net weight | 332 kg |

Tabletop



Description

Tabletop built as a dual plate system with upper plate, lower plate and support construction of 2 beams lengthwise and 3 cross beams achieving flatness acc. workstandard WN5110000 in dependance upon DIN ISO 2768-2. The dual plate design enables the use of different surface materials which can be chosen in accordance with the working task (see table materials). In standard top plate is made from material S355 (lower plate standard S235). The surface is carrying a Ø28mm hole grid 100x100mm which allows the usage of various clamping tools (available clamping tools can be selected in our website www.tempotec.de). At the top plate surface also a line grid is engraved in order to assist visual orientation. Due to the use of two 8mm plates in dual design the optimal thickness of the top plate is 16mm.

| Material of top plate of tabletop | Opt. material description | Tensile strenght MPa | Hardness HV / (HBa) | Type decription | Type no. |
|--|--|----------------------|---------------------|----------------------|----------|
| Regular steel ST52 | S355, 1.0976 | Rm 430-550 | ca. 175 (128-163) | SST 65-105/16 S | 100437 |
| Higher strenght steel ST70 | S700, 1.8974 | Rm 780-950 | ca. 265 (220-280) | SST 65-105/16 S ST70 | 100440 |
| Stainless steel | 304, 1.4301, Niro | Rm 500-700 | ca. 205 (150-200) | SST 65-105/16 S VA | 100443 |
| Other materials for special requirements | For example: Aluminium, electrical insulating Materials for electrical installations | | | | |

Table base



Description

Robust full steel hydraulic scissor table base with 2 hydraulic scissor levers and 2 bottom rails. The weight of the single scissor base unit is 150kg and can take a load of 2000kg. Each bottom rail is equipped with 2 levelling feet providing the opportunity to adjust floor deviations of up to 50mm at place of use. Transportation bars in the bottom rails enabling the easy movement of the unit within the shopfloor by just applying a simple hand fork lift truck. So the entire unit can be moved to different places in the work environment. The lift mechanism is driven by a manual hydraulik pump and 1 single stage hydraulik cylinder. The system is secured with a breakage guard valve mounted into the cylinder. As standard all parts of the table base are longlife coated in black RAL9005 (Powder or KTL). All table base units also are available as single units for many other customer purposes. In this case on request the top rails also can be delivered even with customized hole positions for easily adapting own constructions or plates onto it.